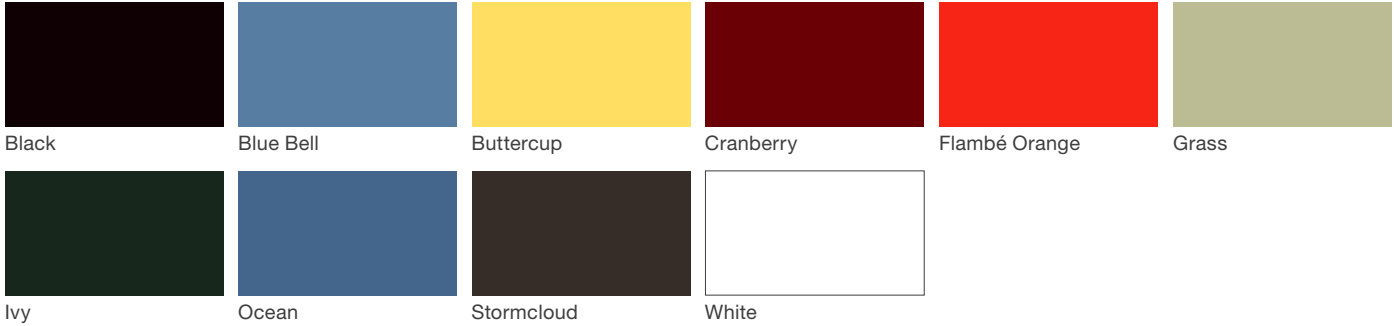


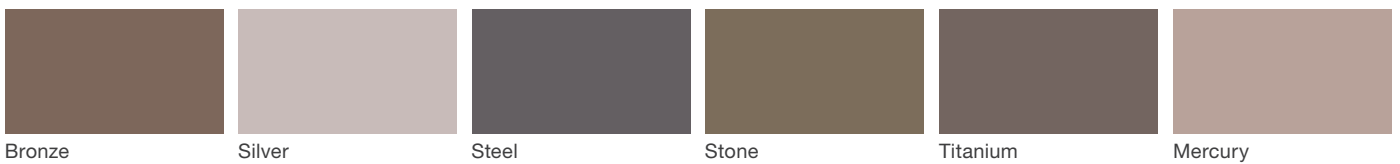
# Finishes & Materials

landscapeforms®

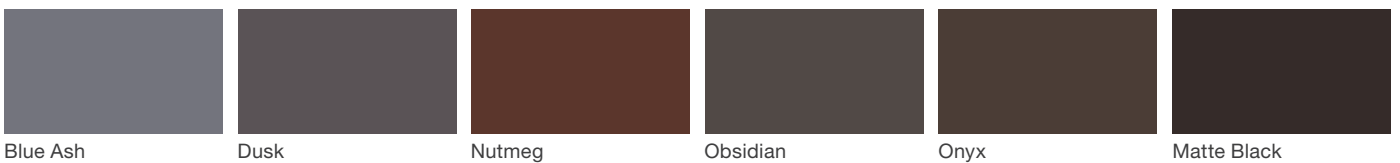
## Powdercoated Metal (Gloss)\*



## Powdercoated Metal (Metallic)\*



## Designer Palette Architectural Series (Low Sheen)\*



## Loll Designs Powdercoated Metal (Low Sheen)\*



# Finishes & Materials

landscapeforms®

## Polyethylene\*



Black

Blue Bell

Daisy

Fog

Grass

Otter



Pine

Sky

Millstone (only available with Rosa)

Habanero (only available with Chill)

Silver

## Loll Designs High-Density Polyethylene (H.D.P.E.)\*



Charcoal Grey

Apple Red

Leaf Green

Sunset Orange

## Woodgrains (Exterior, No Finish)\*



Domestically Sourced Thermally Modified Ash

Ipe (P)

Redwood

Jarrah (P)

Teak

Alaskan Yellow Cedar

## Woodgrains (Interior, LF-80 Finish)\*



Domestically Sourced Thermally Modified Ash

Oak

Maple

Jarrah (P)

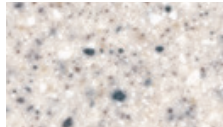
# Finishes & Materials

landscapeforms®

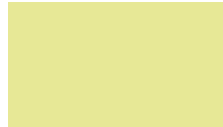
## Solid Surface Marneaux®



Blue



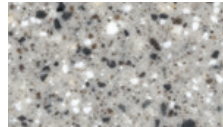
Calgary



Celery



Jade



Mist



Pueblo

## Sunbrella® Umbrella Fabric



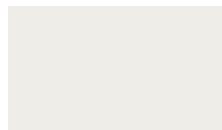
Buttercup



Forest Green



Ginkgo



Natural



Tuscan

## Phifertex® Plus



White



Metallica Platinum



Black

## MeldStone™\*



Natural White



Natural Ecu



Natural Grey

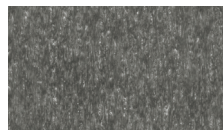
## Polysite®



Bark



Black



Drift Wood

## **Powdercoated Metal**

Powdercoated Metal Pangard II® Polyester Powdercoat is a hard, yet flexible, finish that resists rusting, chipping, peeling and fading. In addition to colors shown, a wide selection of optional and custom colors may be specified for an upcharge. Please note, the Loll Designs Powdercoat colors are only available standard with Harvest, Glide & Americana.

\* All colors and patterns shown are approximate and may vary from sample and final.

## **Polyethylene**

Polyethylene Rotationally-molded polyethylene is produced by tumbling polyethylene powder in a mold under heat. The material provides strong structure with integral color that stands up to heavy use and is easily cleaned. Aggregate colors are subject to an upcharge.

\* All colors and patterns shown are approximate and may vary from sample and final.

## **Loll Designs High Density Polyethylene**

Loll Designs High Density Polyethylene is made of 100% recycled HDPE (high density polyethylene) sourced primarily from recycled milk jugs.

## **Woodgrains (Exterior, No Finish)**

Exterior woods weather to a warm, pewter gray; no finish is applied so no maintenance is required. Available in Ipe, Jarrah, and Domestically Sourced Thermally Modified Ash (DSTMA); and if applicable, Redwood, Teak, or Alaskan Yellow Cedar. Pricing for standard woods and options varies. (P) = Premium Woods

\* All colors and woodgrains shown are approximate and may vary

## **Woodgrains (Interior, LF-80 Finish)**

Interior woods are specified with a special stain, LF-80, for interior applications. Available in Oak, Maple, Jarrah, and Domestically Sourced Thermally Modified Ash (DSTMA). Pricing for standard woods and options varies. (P) = Premium Woods

\* All colors and woodgrains shown are approximate and may vary

## **Solid Surface Marneaux®**

Solid Surface Marneaux® This 100% acrylic resin solid-surface material resists scratching, staining, chipping and cracking. Weather, harsh chemicals and UV rays have virtually no effect on the “throughbody” color or structural integrity of the material. Optional colors are available at an additional charge.

## **Sunbrella® Umbrella Fabric**

Sunbrella® Umbrella Fabric Marine-grade fabric cover, 100% solutiondyed fiber treated for a high degree of fade-resistance; mildew proof; meets California Technical Bulletin #117 Section E (CS-191-53).

## **Phifertex® Plus**

Phifertex® Plus is designed and engineered for a wide variety of applications that demand extra strength and/or dimensional stability. Phifertex Plus is highly durable, easy to clean and mildew, stain and fade resistant.

## **MeldStone™**

MeldStone™ (Ultra-high performance concrete) A highly engineered material that enables casting of lighter weight, thin-profile forms with exceptional strength and high resistance to compression, bending, impact and wear.

\* All colors and patterns shown are approximate and may vary from sample and final.

## **Polysite®**

Polysite® Made of recycled 100% high-density polyethylene, polysite will not rot, splinter or crack and resists moisture, corrosive substances and insects.

\* All colors and patterns shown are approximate and may vary from sample and final.

\* All colors and woodgrains shown are approximate and may vary from sample and final.

*Visit [landscapeforms.com](http://landscapeforms.com) for more information. Specifications are subject to change without notice. Landscape Forms supports the Landscape Architecture Foundation at the Second Century level. ©2020 Landscape Forms, Inc. Printed in U.S.A.*

*[landscapeforms.com](http://landscapeforms.com) | [specify@landscapeforms.com](mailto:specify@landscapeforms.com)*