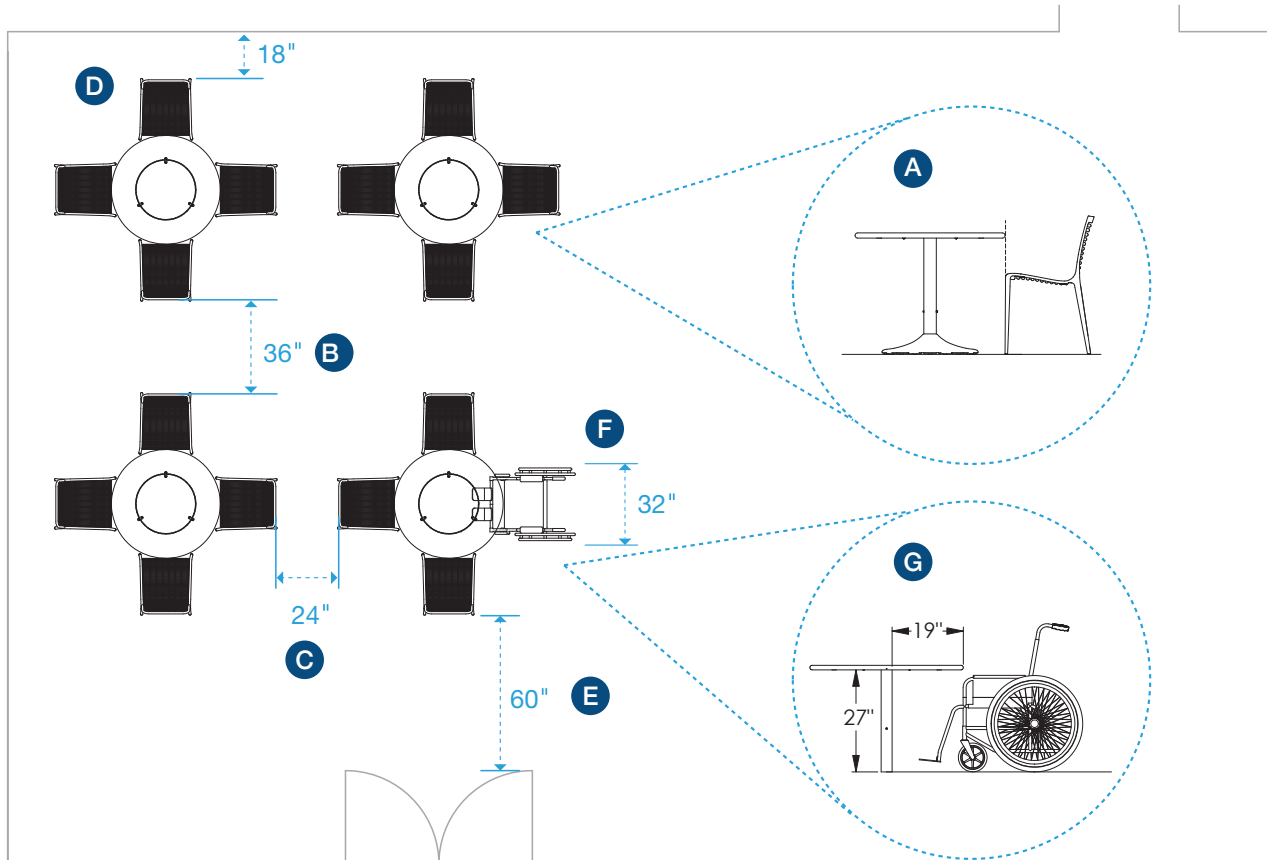


SPACE PLANNING TIPS

From pocket parks to public plazas, there are myriad variables to consider when determining arrangements of site furnishings. To assist you in this process, we've gathered some basic spacing suggestions **based upon our many years of experience activating outdoor spaces.**

Table Spacing Guide: Freestanding Tables

Our spacing recommendations for a few common table and seating scenarios:



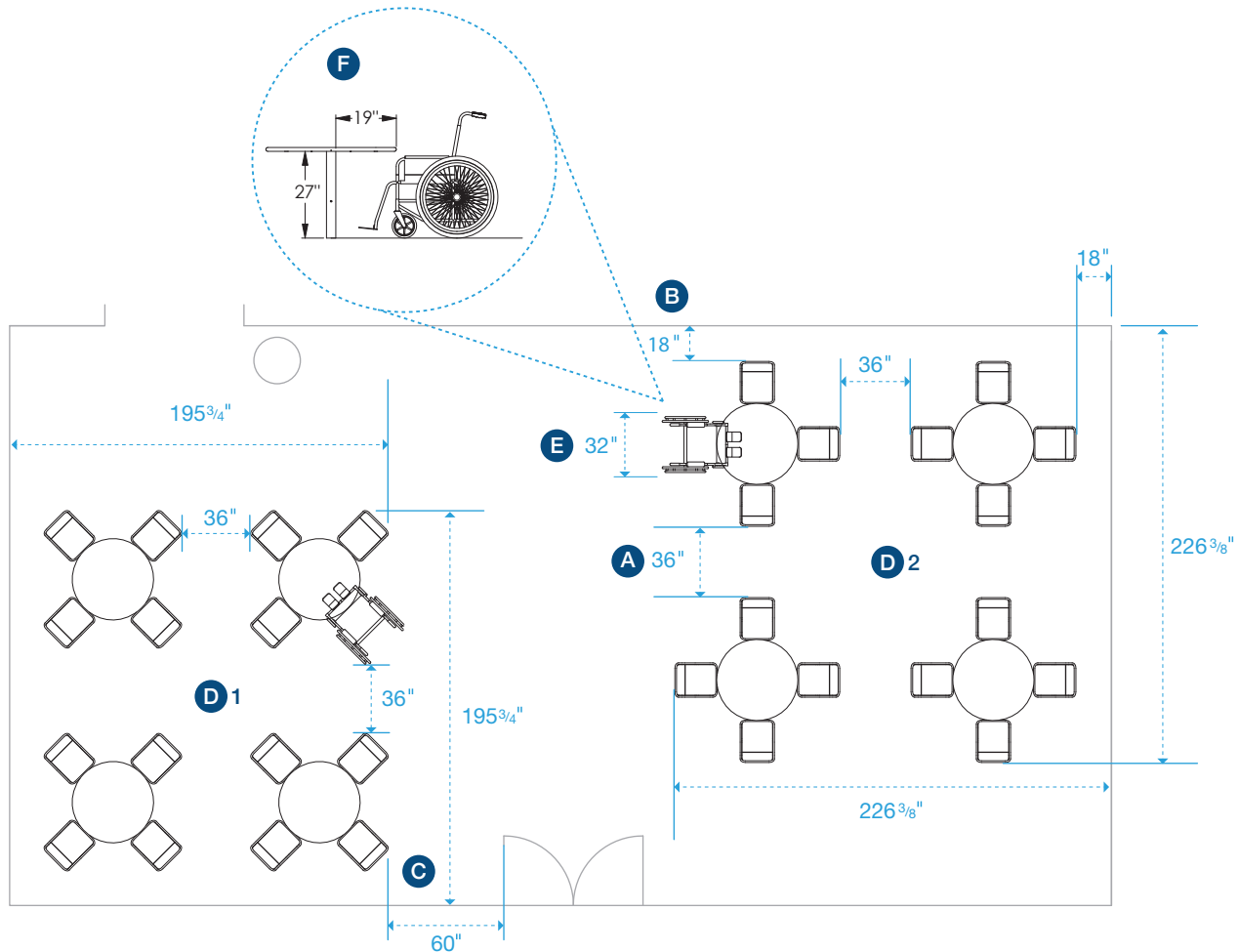
- A.** Distances referenced here assume the front edge of a chair lines up with the edge of a table top.
- B.** Allow a minimum of 36" between seat backs to permit wheelchair access between tables.
- C.** Allow a minimum of 24" between seat backs to provide a walkway between tables.
- D.** Allow a minimum of 18" between a seat back and a wall or edge to permit access to all seats.
- E.** Allow a minimum of 60" between a seat back and a site's entrance to allow for easy egress.
- F.** Please refer to ADA guidelines and local codes to determine the number of wheelchair accessible seating spaces needed in a seating group. It is recommended that a minimum of 32" in width be provided to accommodate a wheelchair at a table.
- G.** The minimum height and depth clearances necessary to accommodate a wheelchair at a table are 27" and 19", respectively.

SPACE PLANNING TIPS

From pocket parks to public plazas, there are myriad variables to consider when determining arrangements of site furnishings. To assist you in this process, we've gathered some basic spacing suggestions **based upon our many years of experience activating outdoor spaces.**

Table Spacing Guide: Fixed Seating Tables

Our spacing recommendations for a few common table and seating scenarios:



- A.** Allow a minimum of 36" between seat backs to permit wheelchair access between tables.
- B.** Allow a minimum of 18" between a seat back and a wall or edge to permit access to all seats.
- C.** Allow a minimum of 60" between the seat back of a table unit and a site's entrance to allow for easy egress.
- D.** Aligning a group of tables at a 45 degree angle reduces the overall footprint of the group while still maintaining the minimum recommended spacing and unit quantity. Compare the footprints of D1 and D2 above.
- E.** Please refer to ADA guidelines and local codes to determine the number of wheelchair accessible seating spaces needed in a seating group. It is recommended that a minimum of 32" in width be provided to accommodate a wheelchair at a table.
- F.** The minimum height and depth clearances necessary to accommodate a wheelchair at a table are 27" and 19", respectively.