

Instructions

Assembly
Installation
Operation

7/2007

Washington Square

Washington Square units are shipped fully assembled, ready to be placed into service as freestanding furniture. The plastic glides allow surface mounting, if that is desired. Although anchoring procedure and hardware are the responsibility of the installer, we suggest the following:

1. Select corrosion resistant anchors appropriate for the surface. Your hardware store or builders supply may be able to recommend the proper hardware, tools, and safety equipment. Follow the anchor manufacturer's instructions for drilling holes and installing anchors. Washington Square seat and side table glides will accommodate anchors 3/8" diameter or less. Litter receptacle glides will accommodate anchors 1/4" diameter or less. Select anchor length to accommodate glide height of 1 1/4" (see Figure 1).
2. Place the unit in the desired position.
3. Center copies of Figure 2 under each leg to be surface mounted. Secure copies to the surface temporarily with adhesive tape. These sheets will locate the centers of holes to be drilled for anchors.
4. Move the unit to allow access for drilling holes.
5. **Helpful hint** - make a drill guide out of plywood or similar material approximately 6" x 24". Drill a hole near one end the same size as the hole required for the anchor. Position the hole in the drill guide over the center of the anchor location. Stand on the drill guide while drilling holes for the anchors.
6. Install the anchors according to the manufacturer's instructions.
7. Remove the plastic glides from the furniture legs by loosening the socket set screws with a 1/8" Allen wrench.
8. Fasten the plastic glides to the floor. Anchors should be snug. Overtightening the anchors can damage the plastic glides. **Note** - high torque required to set wedge style anchors may damage the glides. Set the anchors before installing the glides.
9. Slide the legs of the unit back onto the glides. Tap the glides sideways to align them with the legs, if necessary. Note- an uneven surface may require shimming one glide. 3/8" stainless steel flat washers are recommended. Tighten the set screws.
10. Touch-up paint may be used to hide the set screws and make removal more difficult.

ASSEMBLE WITH CARE! Pangard II® Polyester Powdercoat is a strong, long-lasting finish. To protect this finish during assembly, place unwrapped powdercoated parts on packaging foam or other non-marring surface. Do not place or slide powdercoated parts on cement or other hard or textured surface - this will damage the finish causing rust to occur. Use touch-up paint on any gouges in the finish caused by assembly tools.

Instructions

Assembly
Installation
Operation

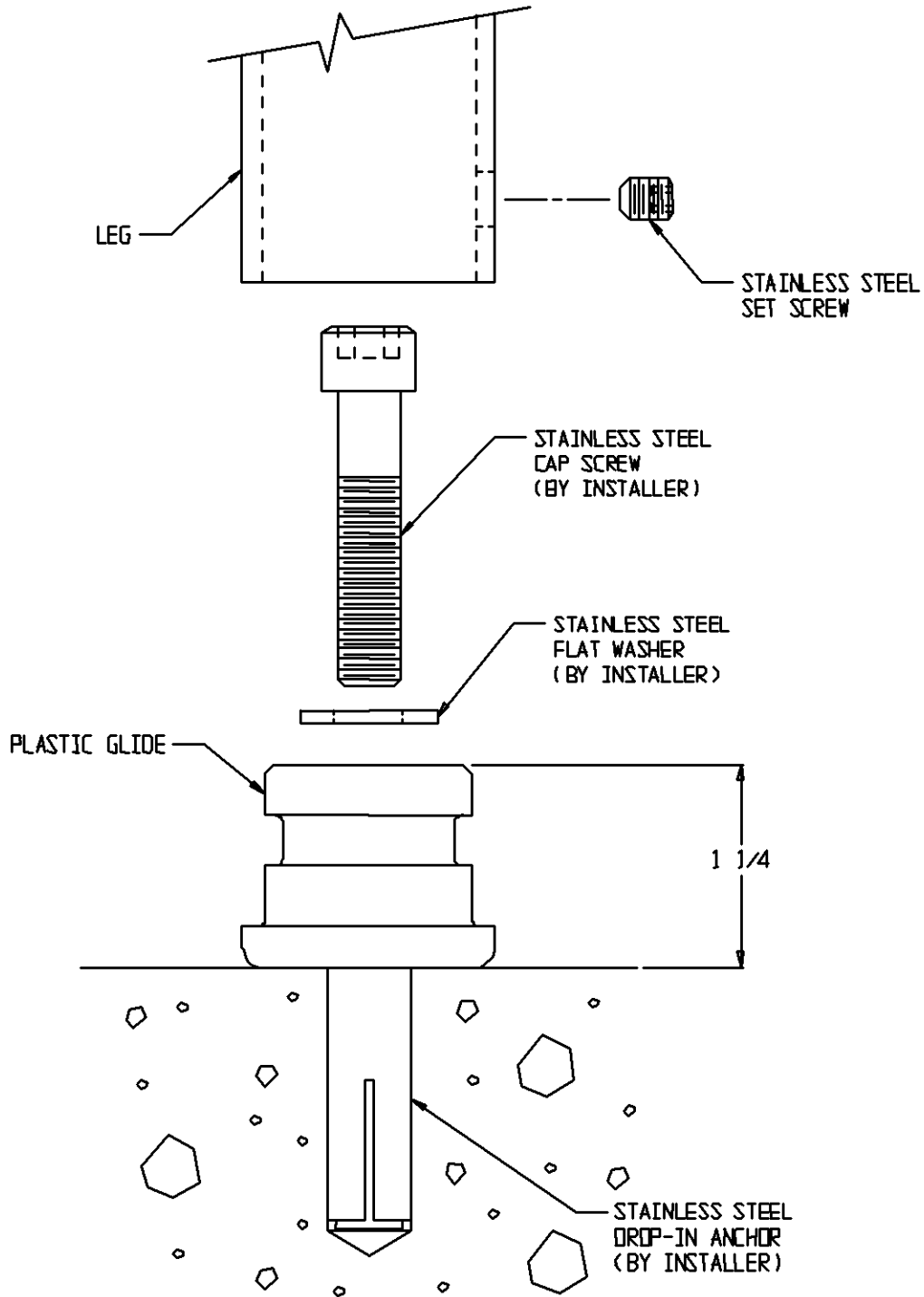


Figure 1

Instructions

Assembly
Installation
Operation

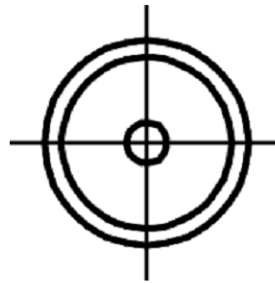


Figure 2