

# Instructions

Assembly  
Installation  
Operation

4/2008

## Plainwell™ Bench and Litter Receptacle Installation Instructions

### Introduction:

The Plainwell bench and litter receptacle are shipped fully assembled with freestanding glides that may be removed for surface mounting. Each leg has a 7/16" diameter hole with a 21/32" counterbore for anchor bolts supplied by others. The leg castings add 1/2" to the length of anchoring hardware. Corrosion resistant hardware is recommended.

**HANDLE WITH CARE!** Pangard II® polyester powder coat is a strong, long-lasting finish. Protect this finish from damage during assembly. Place unwrapped powder coated parts on packaging foam or other nonabrasive surface. Do not place or slide powder coated parts on concrete or other hard or abrasive surfaces – this will damage the finish causing corrosion to occur. Use touch-up paint to repair any finish abrasions.

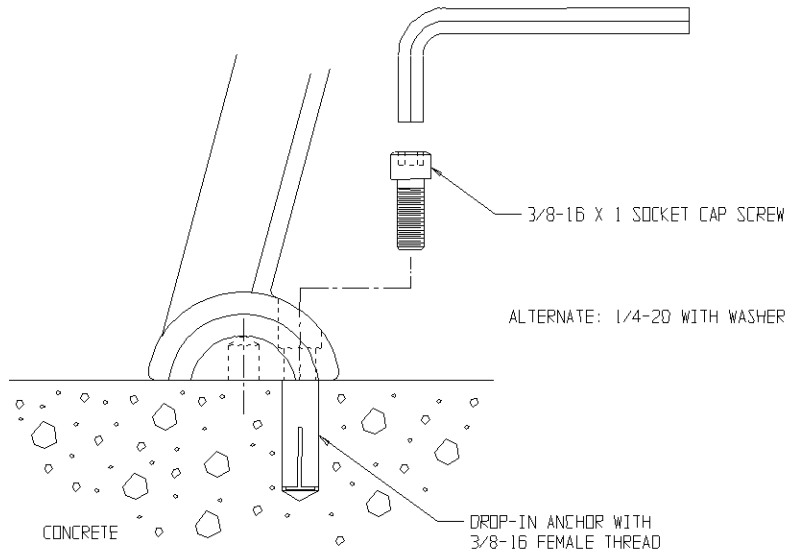
The Plainwell design locates anchors toward the inside of the product where they are less visible and less likely to harm human feet. This makes surface mounting a little more difficult. Two anchors located diagonally opposite may provide adequate security. Although anchoring procedure and hardware are responsibilities of the installer, we suggest the following:

### Surface Mounting:

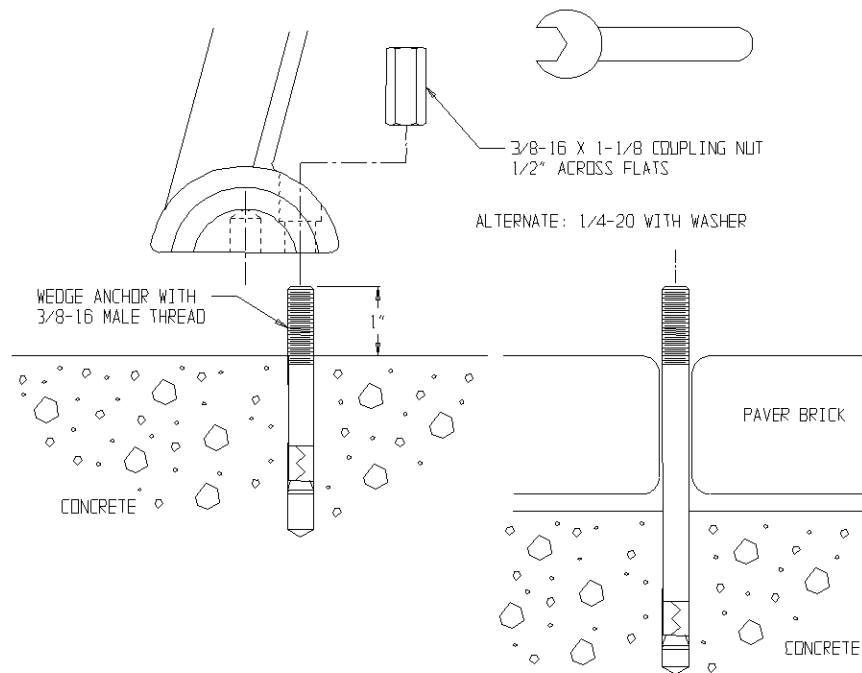
1. Remove nylon glides, and place unit in desired position.
2. Mark anchor locations through holes provided in feet.
3. Drill holes at marked locations according to anchor manufacturer's specification.
4. Place unit in position, and install anchors according to anchor manufacturer's specification.
5. Use stainless steel flat washers to shim units mounted on uneven surfaces.
6. Examples of various anchoring methods follow:

# Instructions

Assembly  
Installation  
Operation



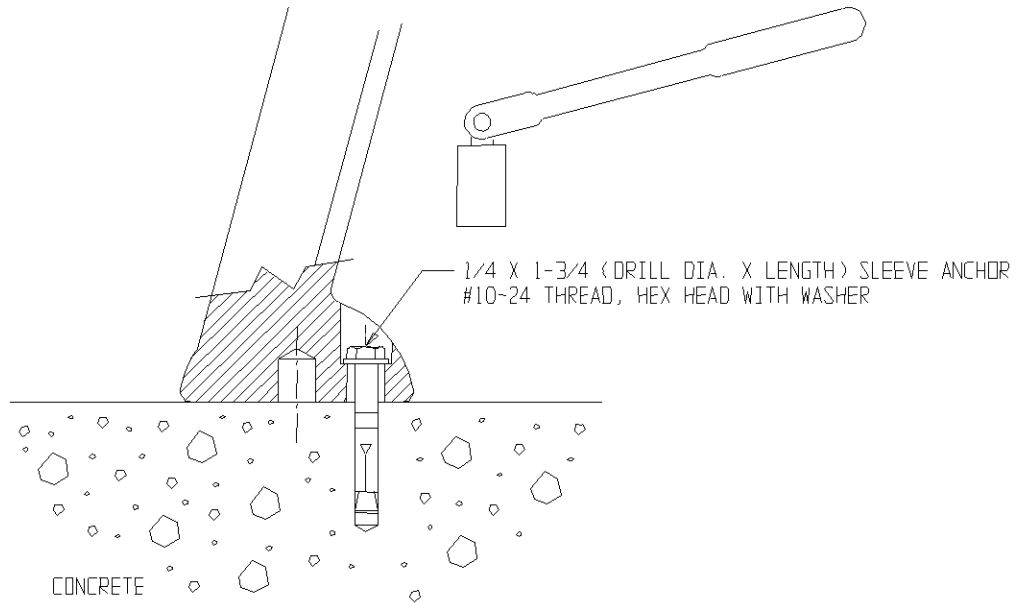
**Figure 1. Drop in anchor**



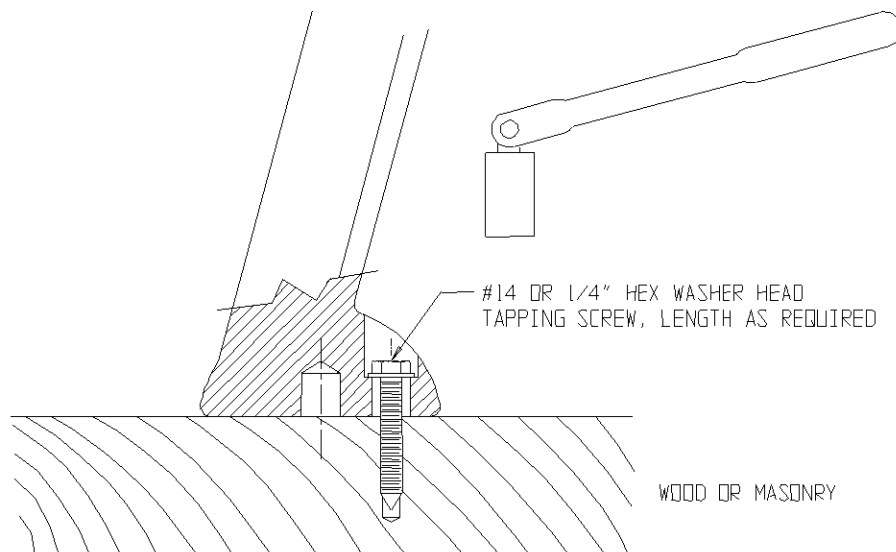
**Figure 2. Wedge anchor and coupling nut**

# Instructions

Assembly  
Installation  
Operation



**Figure 3. Sleeve anchor**



**Figure 4. Tapping screw**