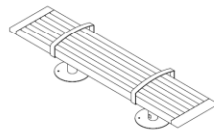
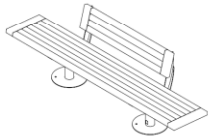


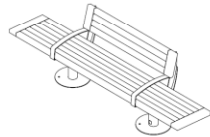
Backless, no arms



Backless, with arms



Backed, no arms



Backed, with arms

Bench options

Included components:

- Bench ship fully assembled.
- Bench must be anchored.

Tools required:

- Non-corrosive anchors (4) required per bench. See Fig. 1 for recommended size.

INSTALLATION:

1. Set unit in place.
2. Mark hole locations. Move unit to allow access for drilling holes.
3. Drill holes according to depth required for anchors. See Fig. 1 for maximum anchor requirements. Clear holes of debris.
4. Install anchors according to anchor manufacturer's recommendations. Tighten securely.

ASSEMBLE WITH CARE! Pangard II® Polyester Powdercoat is a strong, long-lasting finish. To protect this finish during assembly, place unwrapped powdercoated parts on packaging foam or other non-marring surface. Do not place or slide powdercoated parts on concrete or other hard or textured surface – this will damage the finish causing rust to occur. Use touch-up paint on any gouges in the finish caused by assembly tools.

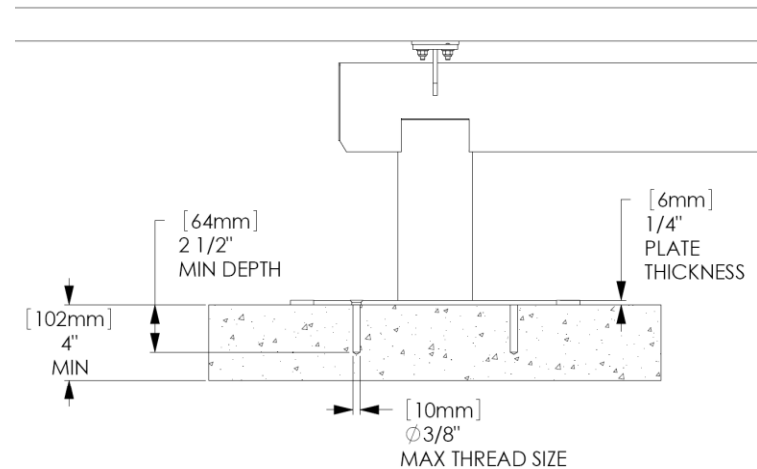


Fig. 1 – Anchor size recommendations

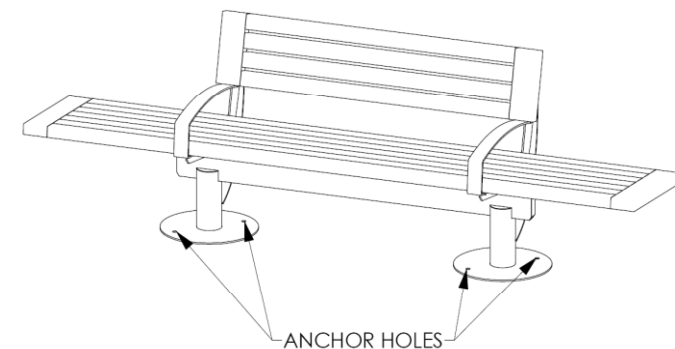


Fig. 2 – Anchor locations